



Tech Tip	
<b>PRODUCT:</b>	DLP
<b>TIP NUMBER:</b>	ASC20041018002
<b>TIP DATE:</b>	10/18/2004
<b>MODELS:</b>	HLP4663WX (L3) HLP4667WX (L3) HLP4674WX (L5) HLP5063WX (L3) HLP5067WX (L3) HLP5085WX (L7) HLP5087WX (L7) HLP5663WX (L3) HLP5667WX (L3) HLP5674WX (L5) HLP5685WX (L7) HLP5687WX (L7) HLP6163WX (L3) HLP6167WX (L3)
<b>Chassis</b>	L62B (L3, L5 & L7) L64A (L3 & L7)

**SUBJECT:** Visual test procedure to verify Ballast operation is OK or defective. This Tech Tip applies to the whole 2004 DLP product line.

**SYMPTOM:** The symptom can range from no video, no turn-on (Dead) to LED error code flashing or displayed.

**SET-UP PROCEDURES:** There are 3 types of chassis involved in the 2004 DLP line. See model and chassis information above and at right.

**L3 & L5 Chassis Set-Up:**

1. Remove the Lower Back Cover of the unit.
2. Remove the Lamp Assy from the Light Engine.
3. Pull back the Light Engine Assy slightly as displayed in figure 1.
4. See Test Procedures section L3 & L5 Ballast Test.

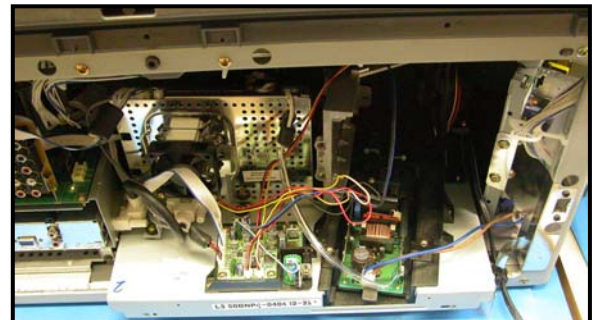


Figure 1

**L7 Chassis Set-Up:**

1. Remove both Back Covers of the unit.
2. Remove the Lamp Assy from the Light Engine.
3. Remove the Plastic Ballast Cover and pull back the Light Engine Assy as displayed in figure 2.
4. See Test Procedures section L7 Ballast Test.

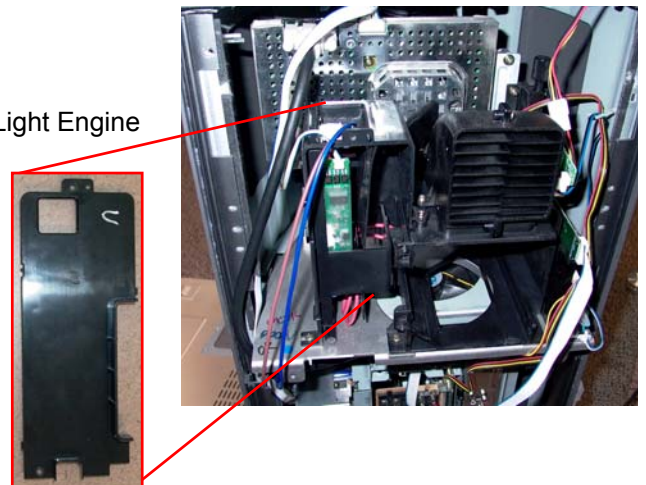


Figure 2

This information is published for experienced repair technicians only and is not intended for use by the public. It does not contain warnings to advise non-technical individuals of possible dangers in attempting to service a product. Only experienced professional technicians should repair products powered by electricity. Any attempt to service or repair the product or products dealt with in this information by anyone else could result in serious injury or death. Information provided in this bulletin is subject to change or update without notice.

## TEST PROCEDURES:

### L3 & L5 Ballast Test:

1. Plug in the unit.
2. Turn power on.
3. During the DLP Lamp start process; the DMD PCB activates the Ballast PCB. If the Ballast is operating properly, the Igniter Spark Gap Tube will begin to glow a few seconds into the process. The Spark Gap Tube will only glow for a short amount of time, then go dark. An audible sound is also heard during this time. This procedure will repeat itself every 15 – 30 seconds for approximately 2 to 4 minutes. See figure 3 for the location of Spark Gap Tube.
4. If the Spark Gap Tube ignites as shown in figure 3, yet the Lamp never turns on when connected, then the Lamp is defective.
5. If the Tube does not light up as described in step 3 above, consult Flow Chart 1 for further troubleshooting.

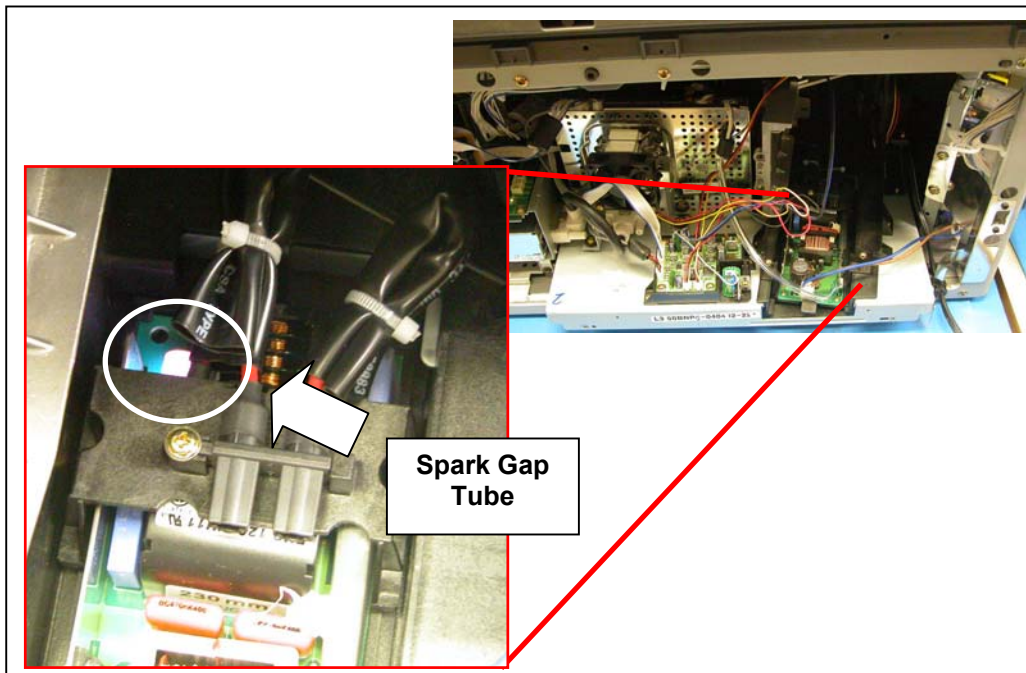


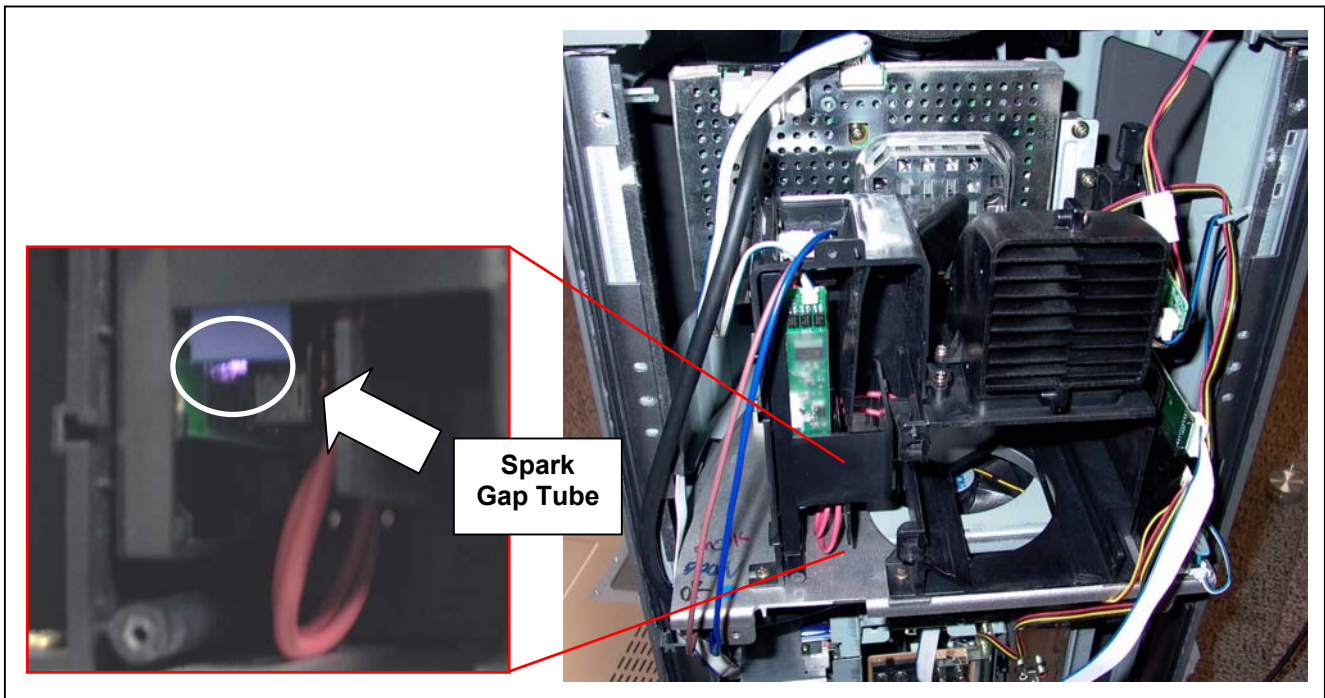
Figure 3

This information is published for experienced repair technicians only and is not intended for use by the public. It does not contain warnings to advise non-technical individuals of possible dangers in attempting to service a product. Only experienced professional technicians should repair products powered by electricity. Any attempt to service or repair the product or products dealt with in this information by anyone else could result in serious injury or death. Information provided in this bulletin is subject to change or update without notice.

## TEST PROCEDURES: (Continued)

### **L7 Ballast Test:**

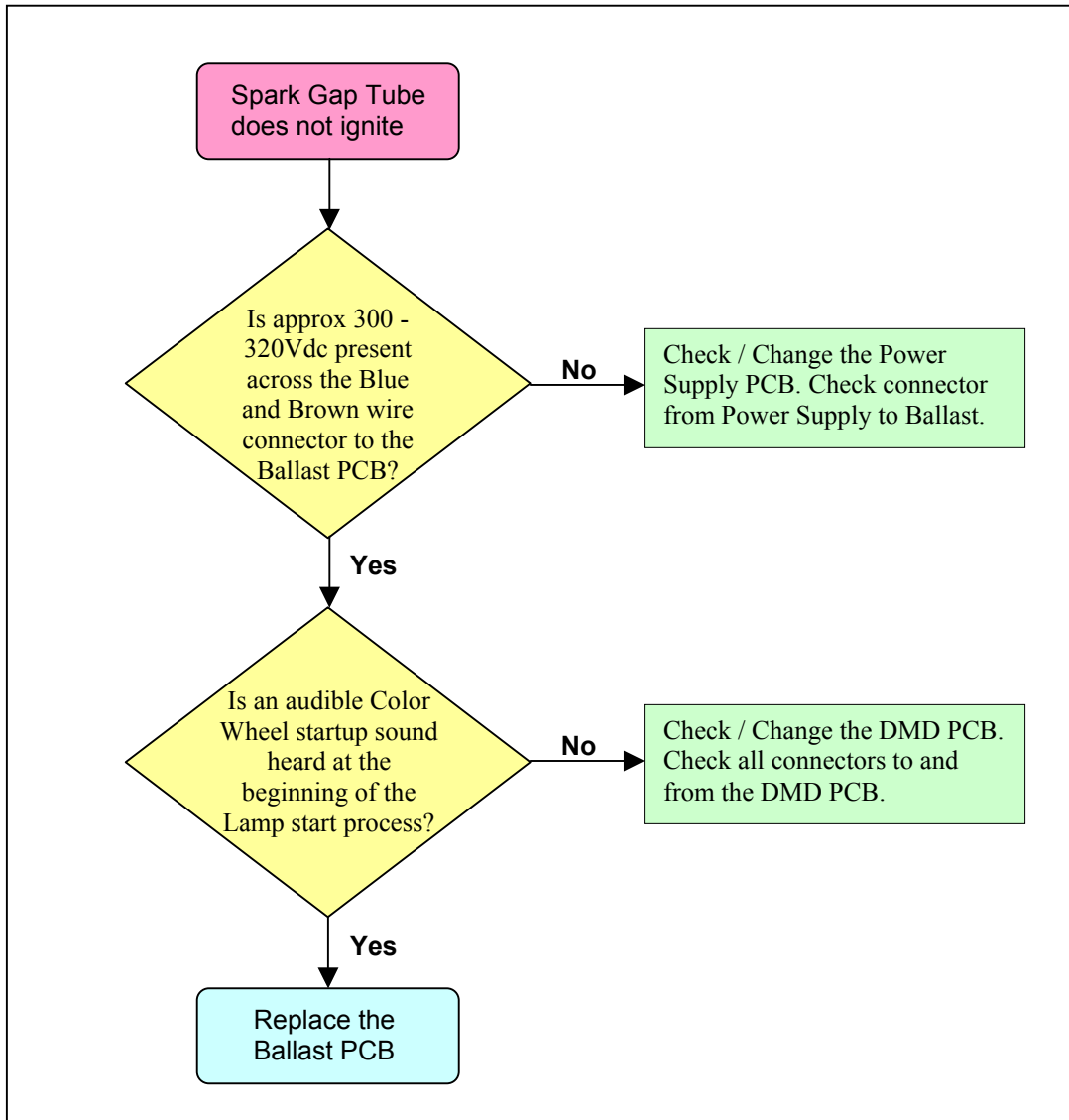
1. Plug in the unit.
2. Turn power on.
3. During the DLP Lamp start process; the DMD PCB activates the Ballast PCB. If the Ballast is operating properly, the Igniter Spark Gap Tube will begin to glow a few seconds into the process. The Spark Gap Tube will only glow for a short amount of time, then go dark. An audible sound is also heard during this time. This procedure will repeat itself every 15 – 35 seconds for approximately 2 to 5 minutes. See figure 4 for the location of Spark Gap Tube.
4. If the Spark Gap Tube ignites as shown in figure 4, yet the Lamp never turns on when connected, then the Lamp is defective.
5. If the Tube does not light up as described in step 3 above, consult Flow Chart 1 for further troubleshooting.



**Figure 4**

This information is published for experienced repair technicians only and is not intended for use by the public. It does not contain warnings to advise non-technical individuals of possible dangers in attempting to service a product. Only experienced professional technicians should repair products powered by electricity. Any attempt to service or repair the product or products dealt with in this information by anyone else could result in serious injury or death. Information provided in this bulletin is subject to change or update without notice.

## TEST PROCEDURES: (Continued)



Flow Chart 1

**Note:** Consult the Samsung Service Website at ([www.samsungasc.com](http://www.samsungasc.com)) for the Service Manual and other information on this product.

This information is published for experienced repair technicians only and is not intended for use by the public. It does not contain warnings to advise non-technical individuals of possible dangers in attempting to service a product. Only experienced professional technicians should repair products powered by electricity. Any attempt to service or repair the product or products dealt with in this information by anyone else could result in serious injury or death. Information provided in this bulletin is subject to change or update without notice.